



**High-precision
flange for
optimal wheel
clamping**



50% of a good balancing depends on the wheel clamping and centring system. Why risk it?

MAIN FEATURES

- **Excellent** balancing results!
- **Uniform axle load** distribution, like wheel bolts on the vehicle
- **Quick and easy set-up**
- **Indestructible** and **lightweight (only 1.5 kg)**
- **Secure clamping and balancing.** No damage to alloy wheel surfaces or cracks in plastic-coated wheels
- **Pin heads** that correctly fit steel and alloy rims, **interchangeable** by means of a quick-release system
- **UNIVERSAL.** Applicable to any Corghi Ø 40 mm wheel balancer.

Competent and fast service will inspire confidence, ensuring greater customer loyalty.

PRODUCT OVERVIEW



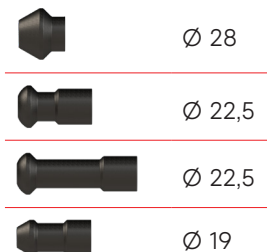
8-21100294 FPF FASTPLATE 5

for 5-hole rims.
Clamping range
95.25 - 180 mm



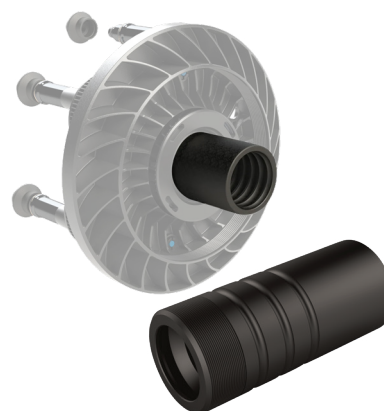
8-21100295 FPF FASTPLATE 3-4-6-8

for 3- 4- 6- 8-hole rims.
Clamping range
95.25 - 180 mm



8-21100296 FPF FASTPLATE KIT

for 3- 4- 5- 6- 8-hole
rims.
Clamping range
95.25 - 180 mm



8-21100297 FPF-C SLEEVE HANDLE

Sleeve for automatic
clamping wheel
balancers. It screws
directly onto the
FASTPLATE to make
work easier and
faster